

Battery box in a compact design



Lithium ion battery pack with a protection electronics (PCM single cells monitoring), protects the battery against overcharge, deep discharge and short circuit always balanced cells.

Connector: Main line: cable with PP-connector (+ red and – black). https://www.accupower.at/products_connector.php

Applications

Automotive,
Industrial,
Sport,
Medical,
and others

State-of-charge LED-indicator

F : Full	L : Low
H : High	⚡ : Battery nearly empty
M : Medium	⚡ : Charge the battery

UN38.3 tested

OEM / ODM service & customized logo available

Pack specifications

Nominal voltage	25.9 V
Capacity (nominal)	10400 mAh
Energy	270 Wh
Weight	1650 ± 15 grams
Size (L x W x H) mm	167 x 100 x 78.5 ±1

Operating specifications

Operating voltage	29.4 V to 21.0 V
Charge voltage	(Max. 29.40 V)
Discharge end voltage	21.0V
Operating temperature: discharge charge	-20°C to 60°C 0°C to 45°C
Max. discharge current	10 A (continuous) 30 A (peak)
Max. charge current	5A (10A) @ (10°C–45°C)

Storage specifications

Storage temperature	1 year : -20~25°C(1*)
Relative humidity (45-75%)	3 months : -20~45°C(1*) 1 month : -20~60°C(1*)
Protection classification IP54 to DIN EN 60529 (VDE0470)	

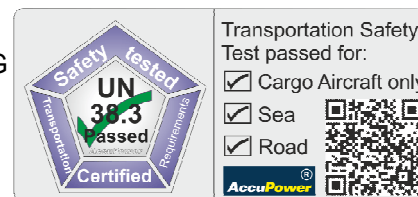
Note (1): If the battery is kept as ex-factory status (30% of charge), the capacity recovery rate is more than 80%.

Standard charging method

0.5C CC (constant current) charge to 29.40V, then CV (constant voltage 29.40V) charge till charge current decline to ≤ 0.02C

Transportation:

Transport according to the current regulations: ADR / RID / ADN / IATA / IMDG
Battery over 100Wh / Class: 9 / UN-Number: UN3480
Shipping name: Lithium ion batteries
Environmental hazards / Marine pollutant: No



Care and safety recommendations:

Never open, short circuit or put in fire. Do not install backwards. Avoid short circuit with metal objects.

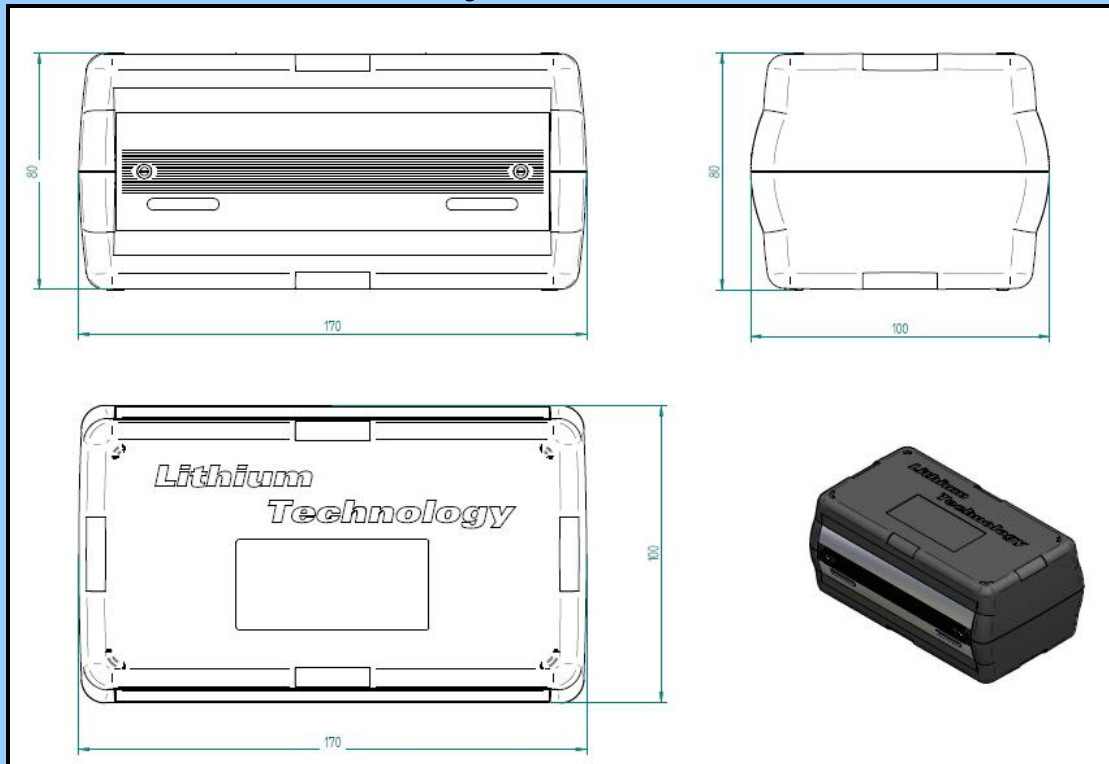
Attention:

Improper handling may result in fire, personal injury or product failure due to leakage or Explosion. Use only the charger specified for this battery type. Improper use will reduce considerably the battery life. Please pay attention to following recommendations:

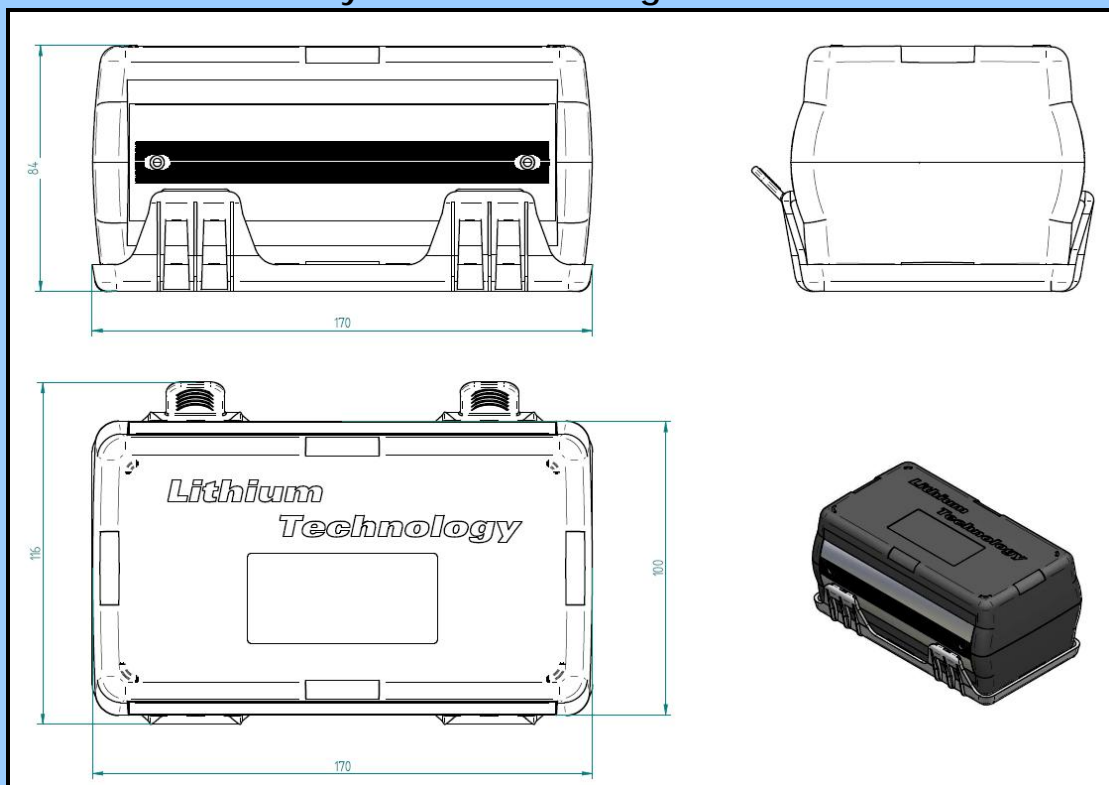
1. Always avoid deep discharge of the battery
2. Charge the battery before longer Storage.
3. Use only the battery charger specified for this battery type.
4. Do not leave battery in charger over 24 hours.
5. Keep it in a cool and dry place.
6. Avoid exposure to high temperatures.
7. Do not disassemble or modify the battery, may cause the battery to generate heat, explode or ignite.
8. Dispose properly used batteries. Dispose it according to the applicable recycling regulations.
Contact your city recycling coordinator.

Mechanical specifications

Battery box dimensions



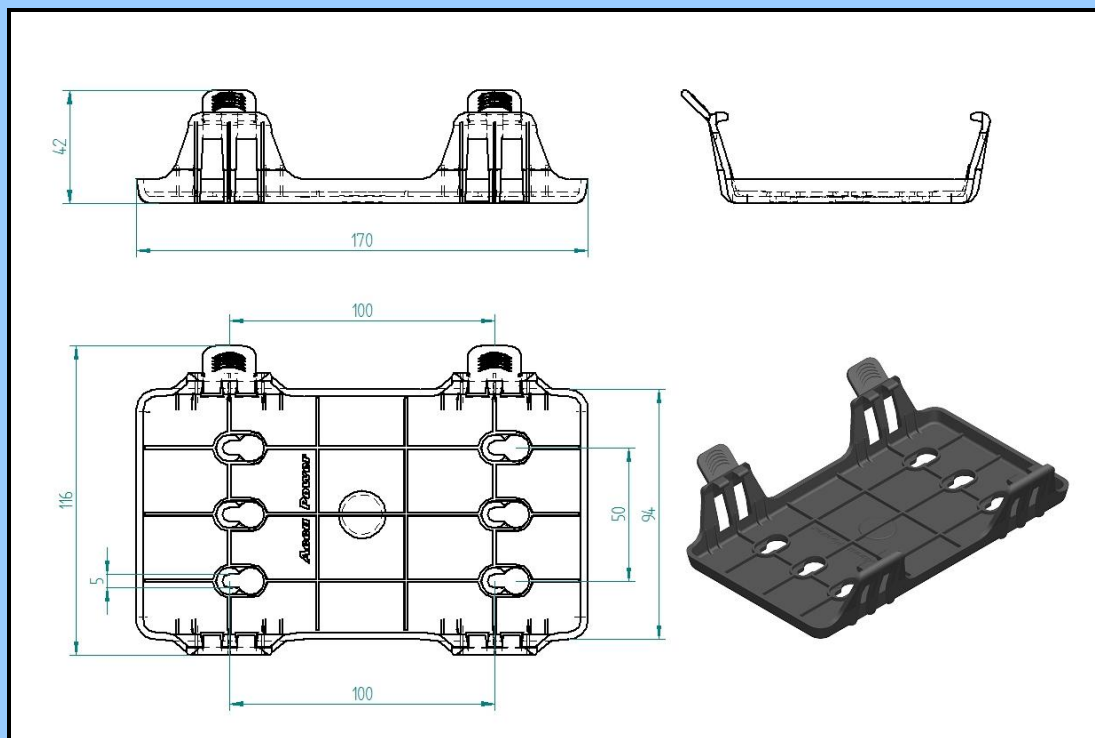
Battery box with holding down device



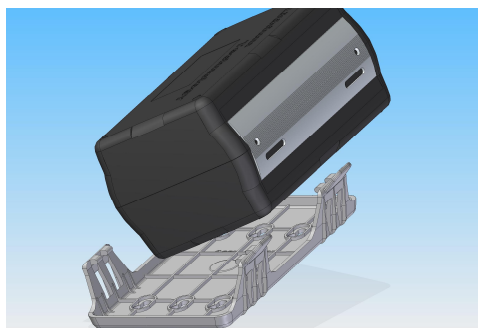
The battery box is fabricated from a durable plastic material for optimal resistance to shock, vibration and resistance to mechanical stress. Robust construction, snap-fit screwless assembly.

OEM / ODM service & customized logo available

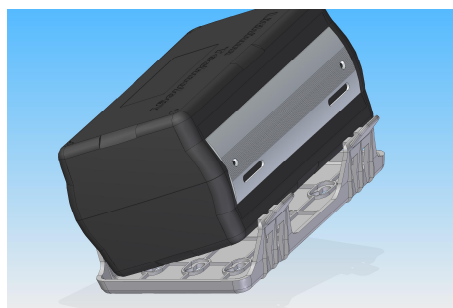
Holding down device work with snapping locking-system



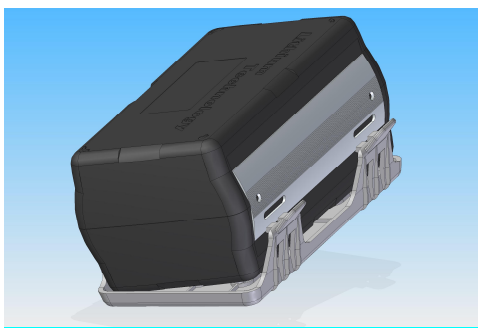
the pictures show you how to fixing the battery on the holder



1



2



3



4

Take note: The holder is optional and not included!

AccuPower is offering an OEM/ODM service - where customers can customize their own design.