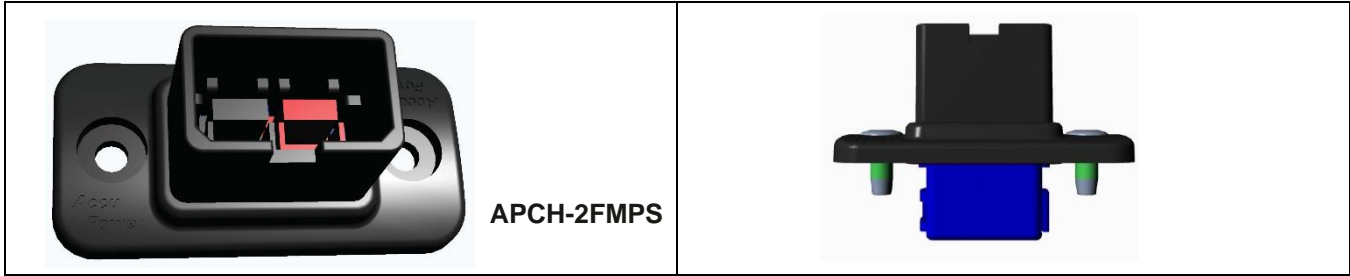


Connection Housing for 2 CONTACTS for Mounting on plane surface: APCH-2FMPS



HOUSING for 2 CONTACTS

With high mechanical strength and cable strain relief.

Suitable for 2 pcs. Powerpole® connectors PP 15/30/45. Ideal for Mounting on plane surface.

Contents: 4 pcs. plastic parts, 2 fixing screws, without Powerpole® connector, unassembled.

Materials: PC / ABS (polycarbonate / acrylonitrile butadiene styrene) is a blend of PC and ABS, combined with great mechanical properties of PC such as impact resistance and heat resistance. Compliant with RoHS

- High impact strength at low temperatures
- Heat resistance
- High strength
- Low shrinkage and high dimensional stability



Physical

plastic parts:

- Material:** PC / ABS (polycarbonate / acrylonitrile butadiene styrene)
- Flammability:** UL 94V-0
- Colour:** Dark Grey

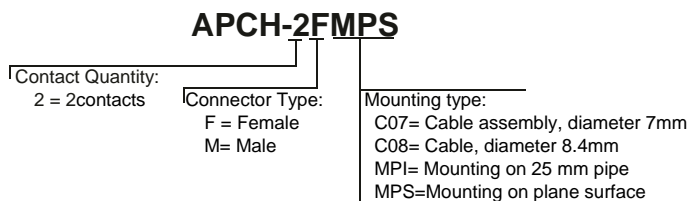


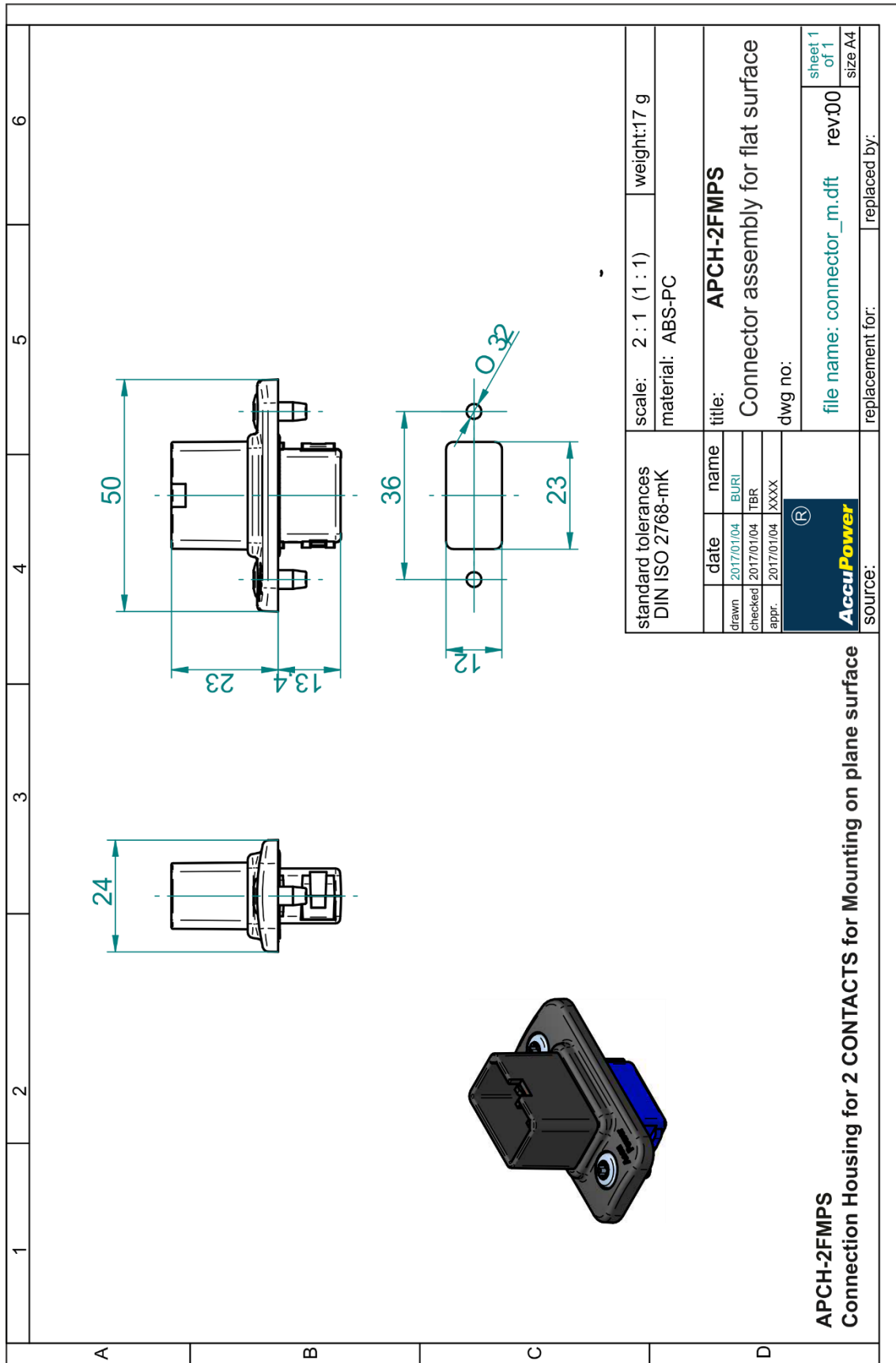
Screw: (2) M4-8 Screws with countersunk Steel hardness with galvanic coatings

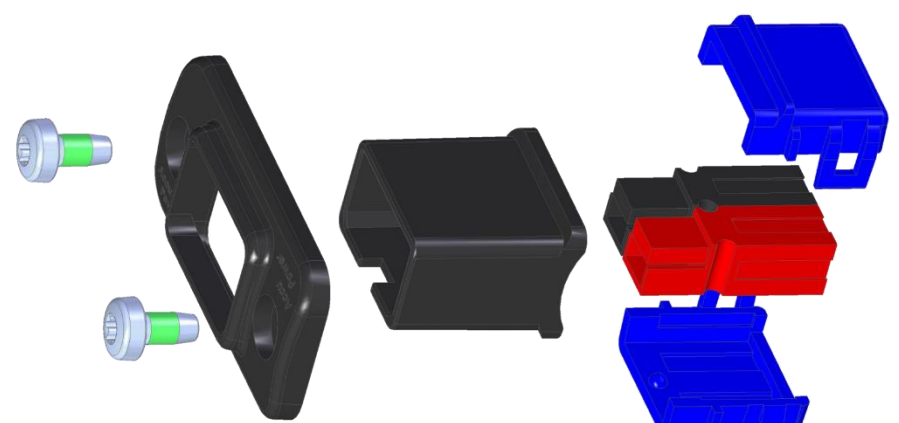
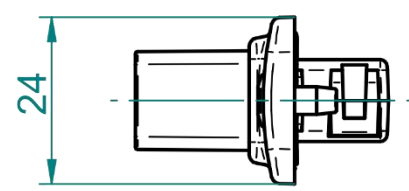


Environmental

Temperature Rating: -25°C to +85°C

Ordering Information





1	2	3	4	5	6
A					 <p>Optional protective cap</p>
<p>APCH-2FMPS Connection Housing for 2 CONTACTS for Mounting on plane surface</p>			<p>standard tolerances DIN ISO 2768-mK</p>		
<p>scale: 2 : 1 (1 : 1)</p>			<p>weight: 15 g</p>		
<p>material: ABS-PC</p>			<p>material: ABS-PC</p>		
<p>title: APCH-2FMPS</p>			<p>title: APCH-2FMPS</p>		
<p>Explanation of assembly</p>			<p>Explanation of assembly</p>		
<p>dwg no:</p>			<p>dwg no:</p>		
<p>file name: connector_m.dft</p>			<p>file name: connector_m.dft</p>		
<p>rev00</p>			<p>rev00</p>		
<p>sheet 1 of 1</p>			<p>sheet 1 of 1</p>		
<p>size A4</p>			<p>size A4</p>		
<p>replaced by:</p>			<p>replaced by:</p>		
<p>source:</p>			<p>source:</p>		
